

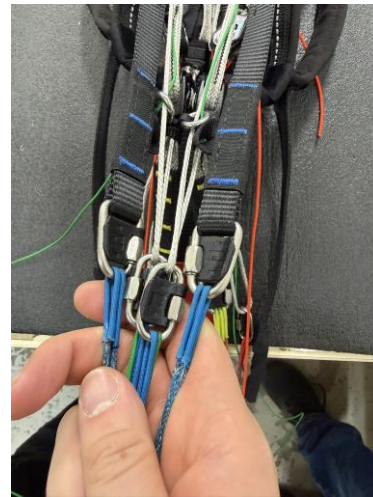
Notice about Warp 3

We received some reports that the center main A lines on some Warp 3 wings are stretching after around 50h of intensive use. C lines may shrink as well resulting in trimming affecting the performance and assumed behavior of the wing. It's common knowledge that unsheathed lines in high performance gliders require more care than those in standard designs. Therefore, we recommend more frequent line inspections for Warp 3 gliders and a quick fix for gliders exhibiting performance loss:

1. Attach the risers to a stable point or ask another person to hold them.
2. Select the main lines of row C and C' (CP1, CP2, CP3).



3. Move to the wing canopy.



4. Starting from the center, grab the first pair of corresponding lines in row C (left and right side).



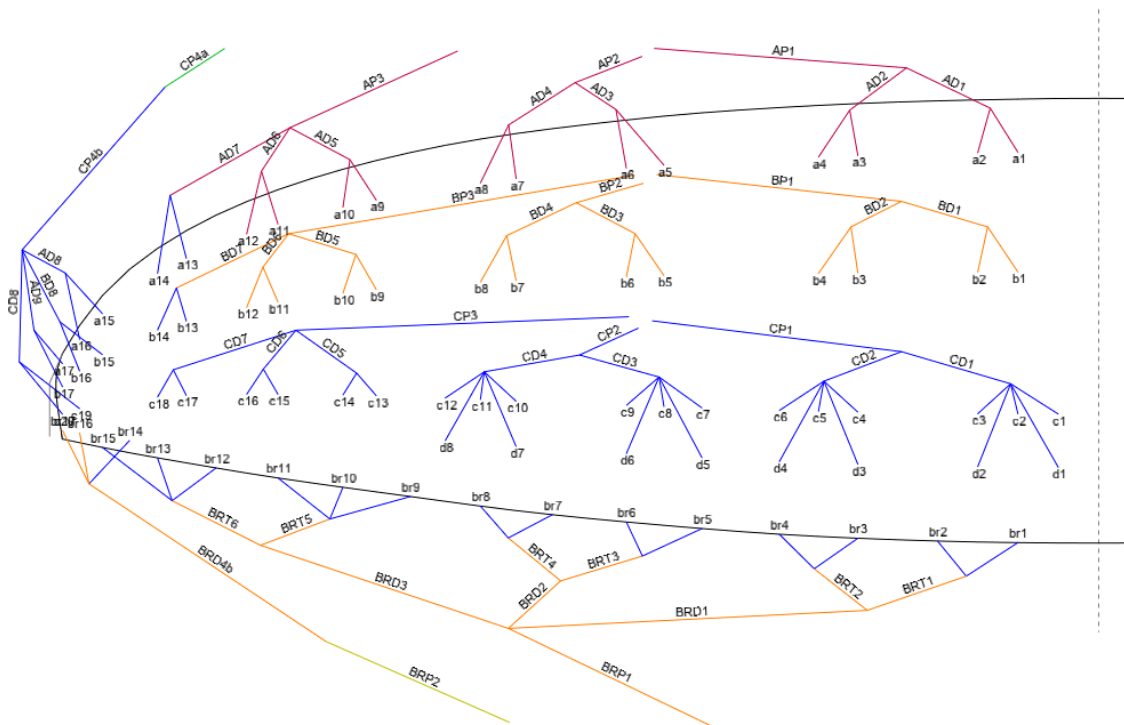
5. Pull the lines symmetrically with a force of about 15–20 kg.



6. Repeat for all lines in row C, then do the same for row D.

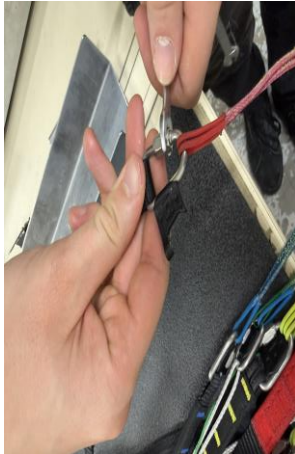


Lines c1-c18, and d1-d8 should be stretched symmetrically on both sides.

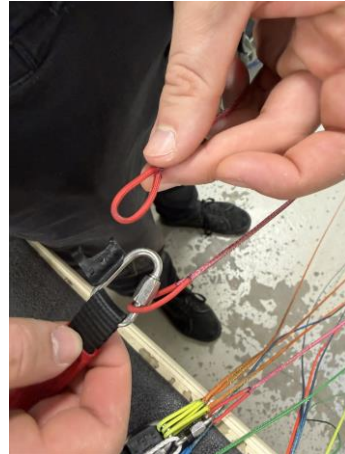


Instruction for trimming the A lines:

7. Open the maillon



8. Carefully remove the line, making sure not to mix it with other lines.



9. Loosen the first connection of the main line.



10. Make the loop as shown in the video linked below.

[Upper Loop Warp3.mov](#)



11. If needed add another loop as shown on the video linked below.

[Lower Loop Warp3.mov](#)

Important!

Make sure the loops are straight, without twists, and tightened. After completing all procedures, visually inspect the wing on the ground before the first flight. If you are not confident, it is best to take the wing to a professional service.

These instructions mainly apply to the Warp 3 wings with serial numbers of: P-xxxxx1, and P-xxxxx2.